

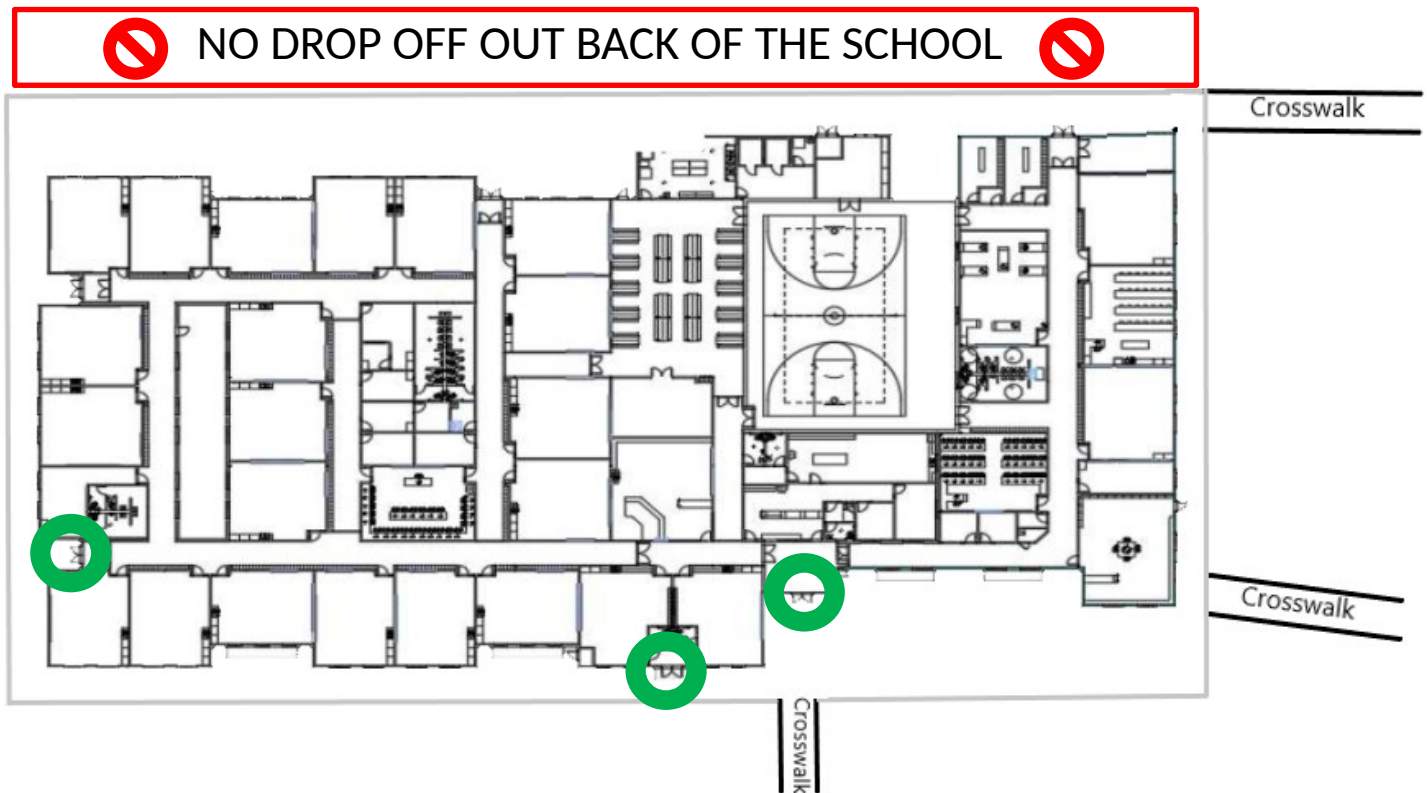
# Scholar Academy Carpool Policies

## **DROP OFF -**

Students in K- 8<sup>th</sup> may be dropped off 20 minutes before the first bell at 8:25 a.m. Breakfast will begin being served at 8:05 for students who would like to eat in the cafeteria. Students will be allowed to play on the playground in the fall and spring if the Principal or Vice Principal are available to take them outside. **As parents pull into the drop off lane, we ask that they pull all the way forward to allow as many students dropped off as possible in a matter of minutes.**

The front doors and the doors on the North side of the building will be open for all students to enter the building. Kindergarten doors will be open for our full-day Kindergarten students to enter. (All doors that will be open are circled in green on the map below)

**No Drop Off will take place on the back side of the school!**



# Scholar Academy Carpool Policies

## PICK UP -

Students must be picked up within 15 minutes of school dismissal or immediately at the conclusion of school-sponsored activity (such as tutoring or Tuesday after school clubs) has ended. Students are not allowed to play on the playground or wander through the school while waiting for their ride. Students must remain outside in a designated location to wait for their parent, guardian, or carpool. If a student's ride has not arrived within 20 minutes the student will be allowed to return to the office to call their parent or guardian.

As parents pull into the pickup lane, we ask that they remain in their vehicles and follow the promptings of teachers to move forward.

We have a crosswalk that exits to 870 N. Parents picking up students outside of school property will have arrange meetings around this area.

**NO STUDENTS WILL BE ALLOWED TO CROSS THE FRONT CROSSWALK TO 1<sup>ST</sup> EAST AT THE END OF THE DAY. ALL STUDENTS WILL BE DIRECTED TO THE CROSSWALK THAT EXITS TO 870 N (street by the apartments)**

Pick up location will be determined by last name:

Students with last name beginning A-L will be picked up at the front of the school

Students with last name beginning M-Z will be picked up at the back of the school



**NO STUDENTS ALLOWED TO CROSS PARKING LOT TO 100 E**

